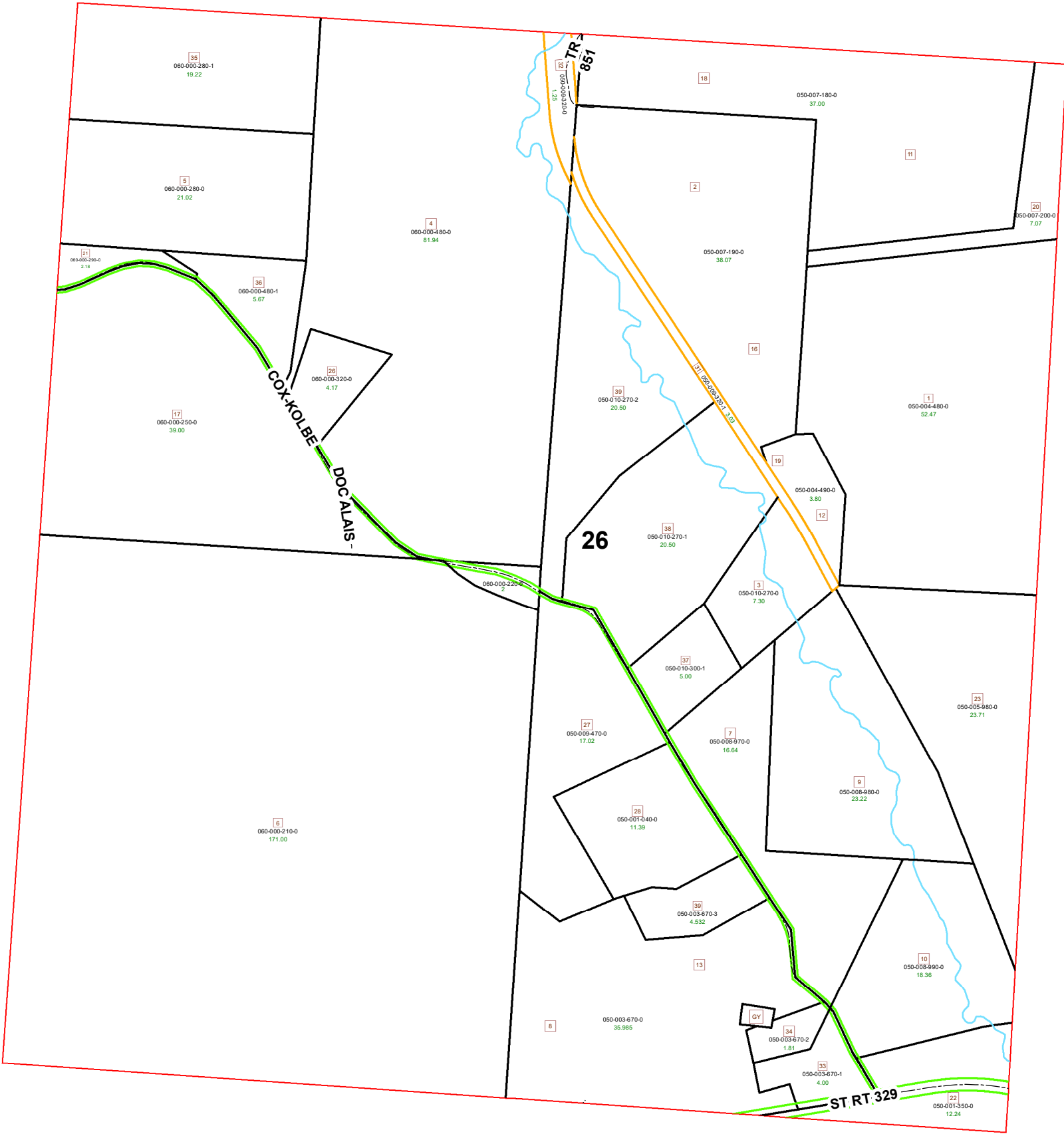


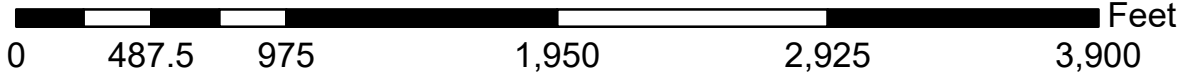
HOMER TOWNSHIP SECTION 26 R13 TWP 7 MORGAN COUNTY, OH

PIN	VOL	PAGE	Owner	LegalDescr	Acre
050-009-470-0	OR207	2025	BLOWER GREGORY J	R13 T07 S26 SD 27	17.02
050-001-350-0	OR223	3447	CABLE GEORGE ARTHUR U/I	R13 T07 S26 SD 22	12.24
050-009-320-1	D.V 204	392	EAST CENTRAL OHIO REALTY	R13 T07 S26 RIGHT	3.03
050-009-320-0	D.V 204	234	EAST CENTRAL OHIO REALTY	R13 T07 S26 RIGHT	1.25
050-001-040-0	OR161	401	GREGORY JEFF & SHARON	R13 T07 S26 SD 28	11.39
060-000-210-0	OR215	631	HAZEN IDA J LC-SHANE C & KATHLEEN J	R13 T07 S26 SD 6	171
060-000-250-0	OR215	631	HAZEN IDA J LC-SHANE C & KATHLEEN J	R13 T07 S26 SD 17 E	39
060-000-220-0	OR215	631	HAZEN IDA J LC-SHANE C & KATHLEEN J	R13 T07 S26 S D	2
050-003-670-3	OR212	1193	HIXON ADAM J & ANGELA M	R13 T07 S26 SD 39	4.532
050-003-670-1	OR7	487	HIXON JASON & TERESA L RUSSELL	R13 T07 S26 SD 33	4.003
050-003-670-2	OR7	487	HIXON JASON & TERESA L RUSSELL	R13 T07 S26 SD 34	1.81
050-008-990-0	OR217	3297	HIXON JASON M & TERESA L	R13 T07 S26 SD 10	18.36
050-005-980-0	OR224	471	HIXON JASON M & TERESA L	R13 T07 S26 SD 23	23.71
050-008-980-0	OR217	3297	HIXON JASON M & TERESA L	R13 T07 S26 SD 9 S	23.22
050-008-970-0	OR217	3297	HIXON JASON M & TERESA L	R13 T07 S26 SD 7 S	16.64
050-003-670-0	OR202	1803	HIXON JOSEPH G	R13 T07 S26 SD 8-1	35.98
050-010-270-0	OR193	556	JOHNSON ASHLEIGH D & BRANDY CASSI	R13 T07 S26 SD 3	7.307
060-000-320-0	OR137	593	JORDAN JAMES KENNETH ETAL	R13 T07 S26 SD 26	4.175
060-000-280-1	OR135	546	LANTZ NEIL K & JANET S	R13 T07 S26 SD 35	19.22
060-000-480-0	OR88	299	LANTZ NEIL K & JANET S C/O FARM CRED	R13 T07 S26 SD 4 S	80.94
050-010-300-1	OR167	98	NICHOLSON DEBORAH TOD-BRANDY M C	R13 T07 S26 SD 37	5
050-007-190-0	D.V 163	41	PAUL STEVEN RICHARD	R13 T07 S26 SD 2-1	38.07
050-007-200-0	D.V 163	41	PAUL STEVEN RICHARD	R13 T07 S26 SD 20 E	7.07
050-007-180-0	D.V 163	41	PAUL STEVEN RICHARD	R13 T07 S26 SD 11-	37
050-004-490-0	OR166	736	ROBE ROBERT QUINCY & CHARLOTTE V	R13 T07 S26 SD 12-	3.8
050-004-480-0	OR166	736	ROBE ROBERT QUINCY & CHARLOTTE V	R13 T07 S26 SD 1 S	52.47
060-000-480-1	OR231	1783	ROMER-JORDAN RYAN & KASI	R13 T07 S26 SD 36	5.676
060-000-290-0	OR231	1783	ROMER-JORDAN RYAN & KASI	R13 T07 S26 SD 21	2.18
060-000-280-0	OR231	1783	ROMER-JORDAN RYAN & KASI	R13 T07 S26 SD 5 S	21.02
050-010-270-2	OR207	2883	STEWART CINDY D & JAMES D	R13 T07 S26 SD 39	20.5
050-010-270-1	OR193	540	YOUNG MARK D	R13 T07 S26 SD 38	20.5



Boundaries

- Hidden (dashed line)
- Hydro (blue line)
- Roads (black line)
- County (thick black line)
- Lot (orange line)
- Parcel (thin black line)
- Parcels (white box)
- ROW (green line)
- Section (red line)
- Township (dotted line)



Disclaimer: The information that these maps contains is for reference purposes only. Please bring any erros to the attention of the Engineer's Office staff.
Thank you

Source: Morgan County Engineer's Office
Author: Marcia Wolfe
Date: 6/5/2020